



**MURRAY  
RIVER**  
PADDLESTEAMERS

# PS EMMYLOU & PS AUSTRALIAN STAR

**AUTHENTIC AUSTRALIAN RIVER CRUISES**



**2024/2025**



# Contents

Book With Confidence	3
PS Emmylou History	4
Your Authentic Australian Cruise	5
PS Australian Star	6
Special Offers	8
Cruising - That's All About You	9
Sightseeing - The All Inclusive Local Experience	10
A Taste of Australia	12
Welcome Aboard	14
3 Night Discovery	16
4 Night Explorer	17
7 Night All the Rivers Run	20
Extend Your Stay	22





# Book with CONFIDENCE



## Flexible Bookings & Low Deposits

We know even the best planning may have to change so we offer a low deposit of just \$400 per person to secure your booking which is refundable within 7 days. This gives you the peace of mind to change the date or cancel your booking during this period for a full refund.



## Travel Insurance

In line with changes made by the Australian Government it is no longer a requirement to be fully vaccinated against COVID-19 to cruise aboard PS Emmylou. We do however highly recommend that all guests are fully vaccinated with up-to-date boosters. We also highly recommend that you take adequate Travel Insurance at least 30 days prior to your departure.



## COVID-19 Cruise Well Program

From bow to stern, we're taking extra measures to ensure your health and safety when onboard the Emmylou. Through our Cruise Well Program we follow strict hygiene standards and procedures. We are an accredited, Covid-ready business with NSW Health and ATEC, and in addition, we're recognised by the World Travel & Tourism Council, and the Safe Travel global branding, for our high health and hygiene protocols.

Your crew are trained on appropriate hand hygiene and sanitising practices, and we monitor and maintain these practices to the highest standards on every cruise. While there may be a few additional requirements to protect our guests and staff, your experience on the Emmylou has not changed.



# PS Emmylou

## HISTORY

PS Emmylou, one of Australia's most iconic Paddlesteamers, cruises the Murray River from Echuca, just a 2.5-hour drive from Melbourne. Named after the renowned American country singer Emmylou Harris, this vessel has been a host to thousands of people, including her namesake, delighting them with unforgettable experiences. PS Emmylou also starred in the popular TV series *All the Rivers Run*, where she was renamed the PS Providence.

What makes Emmylou special is her beautifully restored 1906 Marshall and Sons steam engine, which makes her the only wood fired Paddlesteamer in the world offering regular scheduled accommodated river cruises. The side-wheel Paddlesteamers are distinctly Australian, having first plied the Murray River in 1853, establishing a thriving industry that lasted until the rail and roads began servicing the region at the turn of the century. By 1873, there were 240 boats trading along the Murray River, bringing prosperity and development to the region and keeping the previously out-of-the-way settlements in touch with the cities. With the introduction of the railway, the paddlesteamers and their crews gradually lost work until the riverboat industry became but a shadow of its illustrious past.

However, PS Emmylou reminds us of the romantic days of the paddlesteamers and is now an Australian icon of the river. Built locally during 1980-82 in the style of 19th-century paddlesteamers, she is perfectly at home at the Port of Echuca, residing with the last few remaining paddlesteamers of the past. This 30-meter-long and 10-meter-wide steel-hulled vessel with a timber deck underwent a luxury upgrade and fit-out in 2018. The new contemporary cabins and ensuites feature fine linens topped with silky duvets, with the boat's premier cabin, the Emmylou Suite, located on the front Upper Deck, with French Doors opening to a deck and 180-degree views of the river. The vessel accommodates just 16 guests in 8 deluxe cabins, offering small boat boutique cruising at its finest.

Locally owned and operated for over 25 years, the business continues to grow and expand on strong foundations. We are proud to continue the tradition of overnight cruising on Australia's greatest waterway, providing our trademark level of country hospitality aboard an authentic paddlesteamer. Join us for a unique opportunity to connect with Australia's inland history, geography, culture, and cuisine.



# Your Authentic AUSTRALIAN RIVER CRUISE

Cruise along the majestic Murray River at an ambling speed aboard the world's only accommodated wood-fire paddle steamer.



The Murray River, also known as 'the Mighty Murray,' is a magnificent natural wonder that stretches over 2,000 kilometres from Kosciusko National Park in New South Wales, through Victoria, and all the way to Goolwa, South Australia. Its impressive size and beauty have earned it its fitting nickname, as it is the world's third-longest navigable river, surpassed only by the Nile and the Amazon.

For over 40,000 years, Aboriginal communities have lived alongside the river and have left their mark on the landscape. Evidence of their habitation, dating back thousands of years, can still be seen today. The river continues to play an essential role in the agricultural industry for much of inland Victoria and serves as a significant water supply for over 1.5 million households.

The Murray River offers a unique destination to explore one of Australia's most beautiful regions. Visitors can enjoy exploring the riverside towns, discovering the local wildlife, and, of course, taking a relaxing cruise on an old paddlesteamer. One such paddle steamer, the Emmylou, has become a popular and iconic choice for thousands of visitors looking to experience the river in a unique and luxurious way.

Emmylou is the world's only accommodated wood-fire paddle steamer and has been masterfully restored to blend the old with the new. This authentic luxury cruise seamlessly immerses passengers in a bygone era while still providing modern-day comforts. The ship offers three, four, or a

combined 7-night cruise, all-inclusive experiences that allow guests to enjoy the journey as much as the destination.

As passengers board the Emmylou, they are welcomed by the warmth of the 1906 steam engine, and they can watch as the engineer stokes the boiler. Guests can even climb into the wheelhouse to chat with the skipper or sit back and enjoy the changing reflections in the water. The journey offers something for everyone, whether you're captivated by the river itself, the region's pioneering history, or just looking for a way to unwind and relax, the Emmylou provides the ultimate antidote to stress - a soothing, soul-calming river journey with non-stop pampering from friendly crew members, mouth-watering cuisine, and mesmerising scenery. You will experience the peace, tranquillity and relaxation this unique and very Australian experience offers, and just like many before, **you will fall in love with Emmylou** as she unhurriedly saunters down the river.

Despite its small size, the Emmylou has many nooks and crannies where guests can pull up a chair and take in the breathtaking views. The only crowds you'll experience are the flocks of Australian White Ibis feeding in the marshes, Kingfishers hunting for a meal, and mobs of kangaroos. The Emmylou offers an unforgettable and truly unique way to explore the magnificent Murray River and the surrounding region.



## INTRODUCING PS AUSTRALIAN STAR

Embark on a journey into a new era of river cruising with the PS Australian Star—a vessel that not only bears a name steeped in heritage and pride but also represents the pinnacle of luxury on the iconic Murray River.

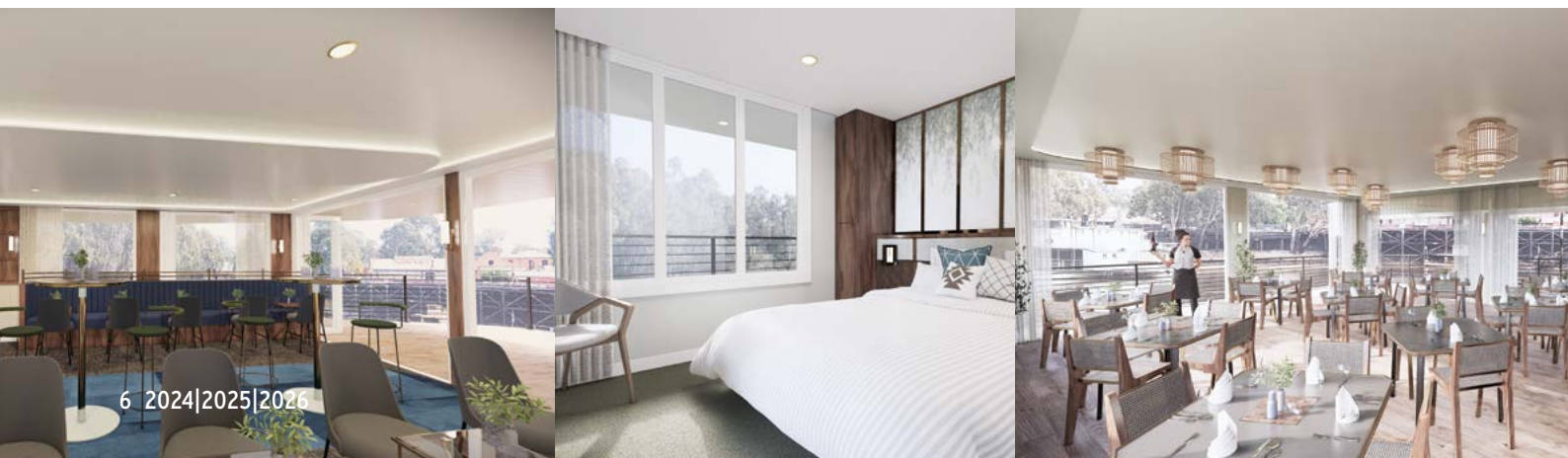
Scheduled for a grand launch in June 2025, the PS Australian Star will redefine river cruising, offering year-round, all-inclusive, overnight experiences with 3, 4, and 7-night itineraries along the majestic Murray River, commencing from the charming town of Echuca in Victoria. Seamlessly taking over the reins of the beloved PS Emmylou, the Australian Star will assume the helm of the existing cruise itineraries, promising a voyage that seamlessly blends tradition with opulence.

As you step onto the decks of the PS Australian Star, you enter a realm where every detail tells a tale of the river's rich heritage and the golden age of paddle steamers. The vessel itself is a masterpiece, a floating testament to the artistry and engineering that defined an era.

Immerse yourself in the symphony of steam from the authentic 1907 wood-fired steam engine and the rhythmic churning of the paddlewheel as we embark on a leisurely voyage along the winding waters of the Murray River.

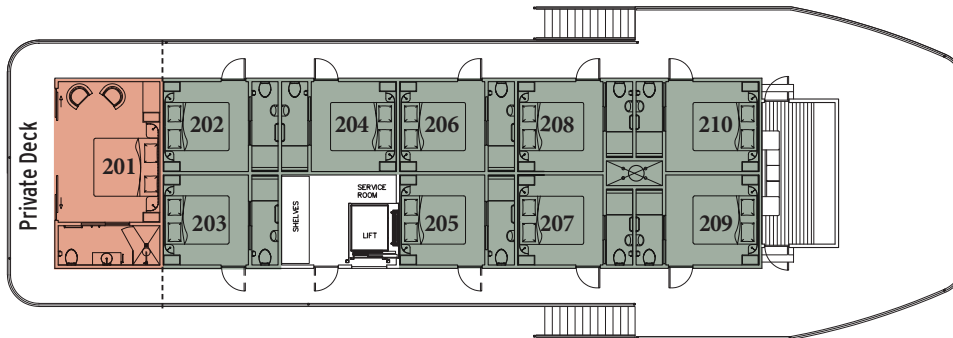
Named in honour of Australia's celestial Southern Cross, the Australian Star invites you to explore its opulent interiors, where each cabin and lounge exudes an air of refinement. From the Hopwood Lounge & Bar, celebrating the entrepreneurial spirit of Echuca's founder, to the Randell Dining Room, paying homage to the pioneering journey of William Randell, every space aboard is a chapter in a captivating narrative that unfolds with every river bend. Boasting 19 plush and modern staterooms, each opening to a deck and featuring an ensuite, air-conditioning, complimentary Wi-Fi, luxury linen, and a TV entertainment system, the Australian Star ensures a luxurious retreat for every traveler. Moreover, its ever-changing river views provide a constant reminder of the beauty that surrounds.

As the PS Australian Star prepares to grace the waters, it beckons you to join a voyage where tradition meets modernity, and luxury becomes an art form. Welcome aboard the PS Australian Star, where history and luxury converge for an unforgettable riverine experience.



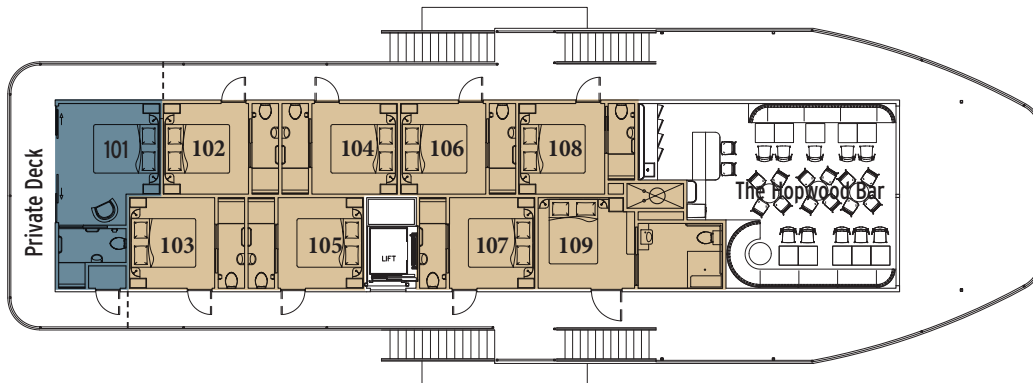


**Deck 2**

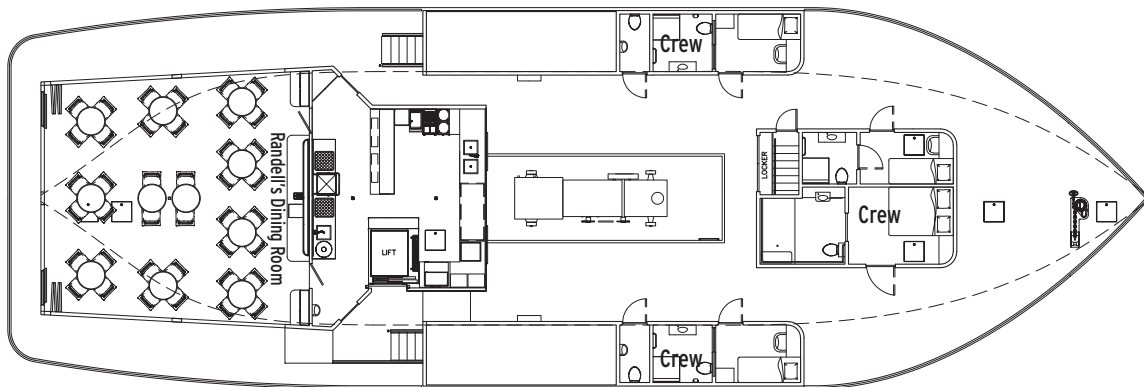


CABIN SIZES	
King Suite	18.6m <sup>2</sup>
Queen Suite	14.3m <sup>2</sup>
Queen Stateroom	10.2m <sup>2</sup>

**Deck 1**



**Main Deck**



**3 NIGHT DISCOVERY CRUISE**

- EX ECHUCA Coach transfers to/from boat included

Deck Category	Cabins	Twin Share PP	Cabin Price
Deck 1	8	\$2,670	\$5,340
Deck 2	9	\$2,670	\$5,340
Deck 1 Owners Queen Suite with Private Deck	1	\$3,300	\$6,600
Deck 2 Owners King Suite with Private Deck	1	\$3,750	\$7,500

Solo Cabin Supplement 75%

**4 NIGHT EXPLORER CRUISE**

- EX ECHUCA Coach transfers to/from boat included

Deck Category	Cabins	Twin Share PP	Cabin Price
Deck 1	8	\$3,560	\$7,120
Deck 2	9	\$3,560	\$7,120
Deck 1 Owners Queen Suite with Private Deck	1	\$4,400	\$8,800
Deck 2 Owners King Suite with Private Deck	1	\$5,000	\$10,000

Solo Cabin Supplement 75%

**7 NIGHT ALL THE RIVERS RUN CRUISE**

- EX ECHUCA Coach transfers to/from boat included

Deck Category	Cabins	Twin Share PP	Cabin Price
Deck 1	8	\$6,280	\$12,560
Deck 2	9	\$6,280	\$12,560
Deck 1 Owners Queen Suite with Private Deck	1	\$7,700	\$15,400
Deck 2 Owners King Suite with Private Deck	1	\$8,750	\$17,500

Solo Cabin Supplement 75%

# Special OFFERS

BOOK  
with  
Friends

## Save **\$300** per couple

Gather some friends and save \$150 per person or \$300 per couple. Available when six or more guests' book twin share at the same time and travel on the same cruise. Combinable with 10% off peak offer.

SAVE  
10%

## Save **10%**

With over 90% of winter days bright and sunny experience the beauty of the Murray during June, July or August.

Solo  
Travellers

## Save **15%** When Cruising Off Peak

Solo travellers who are open to cruising during off-peak times can enjoy an extra 15% discount on the typical Solo Supplement. This means you will only have to pay a 45% surcharge instead of the usual 60% during peak departures. Additionally, solo travellers can join our Solo Standby List to be notified of last-minute availability without any surcharge.





# Cruising

## THAT'S ALL ABOUT YOU

At Murray River Paddlesteamers, we strive to ensure that our guests have a hassle-free and memorable experience on our cruises. That's why we have made sure to include almost everything you need for a comfortable and enjoyable journey. With us, you won't have to worry about optional onboard tours or any additional charges that might dampen your experience.

Moreover, we understand that some guests prefer a kid-free environment to relax and unwind, which is why our cruises are specifically designed for adults. You can be certain that you will be cruising with like-minded guests who share your interests and passions.

We take pride in offering exceptional service and attention to detail, from the comfortable accommodations to the delectable cuisine and mesmerizing scenery. Our team of friendly and knowledgeable crew members are always at your service to ensure that you have a relaxing and stress-free experience on board.

So, sit back, relax and let us take care of everything for you on your Murray River cruise. We promise to make it an unforgettable journey that you will cherish for years to come.

Your

COMPREHENSIVE  
INCLUSIONS:



Return Echuca Station Transfers

Return PS Emmylou Coach Transfers

All Meals Including Onshore Tours

Morning and Afternoon Tea

Selected Wines & Beer with dinner service

Complimentary Barista Coffee, Fine Teas, Soft Drink and Water

Premium Onshore Guide Tours

Award winning service

Riverside Dining & Campfires with entertainment

Complimentary Wi-Fi

All onboard Gratuities



# Sightseeing

ALL INCLUSIVE

LOCAL

EXPERIENCE

Explore the hidden gems of the Murray River with our unique sightseeing activities. Our onshore tours will take you to off-the-beaten-track places of historical, geographical, and cultural significance such as Perricoota Station and local riverside wineries where you can engage in conversation with the local owners.

Experience an eco-discovery cruise aboard the Murray Explorer and dine under the Southern constellations with our signature riverside BBQ complete with entertainment and a campfire. Our fully immersive 7-night cruise includes a Silo Arts Tour with a pub lunch at Colbinabbin and a guided historic walk of the Port of Echuca.

Whether you're a history buff, in need of relaxation, or simply want to experience the beauty of the river, our cruises offer it all, leaving you feeling refreshed, recharged, and knowledgeable about the stunning Murray River region.

“ The peace,  
tranquility and  
relaxation this unique  
and very Australian  
experience offers  
*is just magical* ”



# A Taste OF AUSTRALIA



Our onboard chef draws inspiration from the heartland of Australia, using the region's diverse produce to create hearty meals with a contemporary twist.

You can start your day with a selection of continental options, such as pastries, cereals, and fresh fruits, or opt for a traditional full English breakfast. Our chef takes care of morning tea, lunch, and afternoon tea, allowing you to focus on the day's activities without worrying about an empty stomach. Depending on the itinerary and onshore tours, these meals may range from hot lunches to gourmet picnics on the riverbank. In the evenings, our chef prepares three to five-course dinners that are sure to delight your taste buds.

And what's a trip to the Murray without a classic Australian BBQ under the stars? Watching the sunset on the banks of the Murray is an extraordinary experience that enhances the sounds of the Murray as birds prepare to nest for the evening. All our cruises include an invitation to indulge in this Australian tradition, complete with toasting marshmallows for supper, at our riverside dining table and campfire.

We understand that some guests may have dietary requirements, and our chef can cater to most requests, so please let us know in advance.

We don't allocate meal seating while onboard Emmylou, so you are free to enjoy a meal with fellow passengers or have a quiet dinner with your partner on the deck. A wide variety of drinks, including wine, beer, aperitifs, and soft drinks, are available from the bar, and we are proud to support local wineries.

*“Delicious Cuisine* from breakfast, morning tea and lunch to afternoon canapes and multi-course dinners *”*



Dining aboard Emmylou
Tantalising multi course dinners
Bountiful continental and full breakfast options
Traditional morning and afternoon teas
Vegetarian and gluten-free menu options
Fabulous choice of local and Australian wines and beverages
Complimentary selected wine & beer with Dinner service
Free seat dining
Seasonal alfresco dining with idyllic river views
Riverside BBQ dining under the stars on all cruises with live entertainment



# Welcome ABOARD

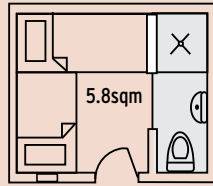
Relax and enjoy the calm water and tranquil surrounds from your private room on the river.

PS Emmylou boasts eight modern and luxurious cabins, each with its own private ensuite, comfortable bedding, and high-quality linens. The cabins are equipped with individual air-conditioning systems and windows that allow fresh country air to flow in. For a direct connection with the outdoors, each cabin also has a door that opens onto the outside deck or veranda. You can stay connected during your trip thanks to the complimentary WIFI that is available throughout the boat, including in the cabins.

Please note that while complimentary coffee and tea making facilities are available in the Saloon throughout your cruise, there are no fridges or coffee/tea making facilities in the cabins.

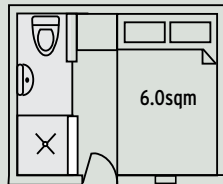
“ I can't remember the last time I was *this relaxed* ”





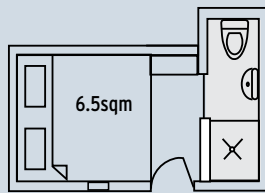
## UPPER DECK TWIN CABIN

The Upper Deck Twin Cabin offers two full-size single beds, the top bed easily accessible, a private ensuite, and with a door that opens directly onto the deck, so you're sure to get an abundance of natural light. (6.0 sqm)



## UPPER DECK DOUBLE CABIN

The Upper Deck Double Cabin offers a private and comfy sanctuary. Each cabin has a snug double bed, private ensuite and a door opening directly onto the deck. (6.0 sqm)

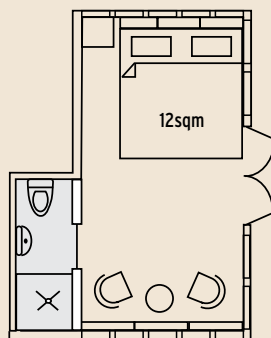


## MAIN DECK QUEEN CABIN

This private cabin boasts a plush queen bed and private ensuite. The cabin is conveniently located on the main deck with close proximity to the saloon. (6.5 sqm)

## UPPER DECK QUEEN CABIN

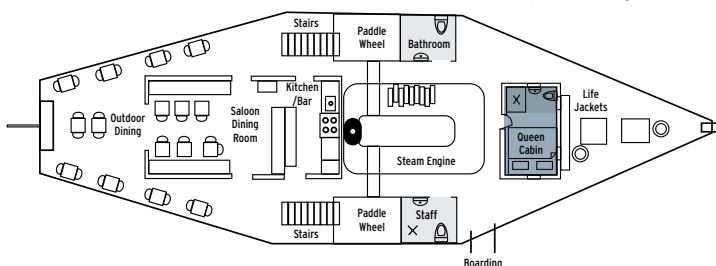
The Upper Deck Queen Cabins allow the outside in, with large doors opening directly onto the veranda. A plush queen bed, with private ensuite makes this a perfect haven to retire to in the evenings. (6.5 sqm)



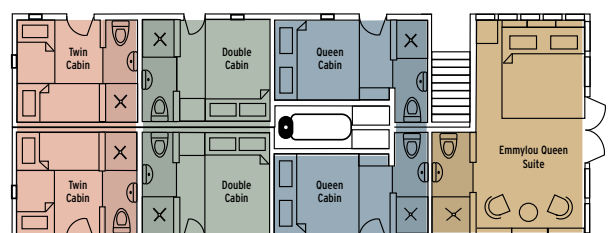
## EMMYLOU QUEEN SUITE

The Emmylou Queen Suite is the boat's premier suite and the most spacious. Located on the upper deck, this elegant suite features plush queen bedding, an ensuite and a seating area. French doors open directly onto the veranda, where you can relax with a drink in hand and take in the ambience as you cruise the Murray River. (12 sqm)

### MAIN DECK



### UPPER DECK





## 3 Night DISCOVERY CRUISE

### Optional Rail

Start your river cruise from Melbourne - Complimentary. Return V/Line Train fares are included in your cruise fare.

### Optional Echuca Car Parking.

Secure undercover car parking is \$30 per night.

### Check In Location

Echuca Car Park - 2.30pm.

### Departure & Arrival Times

Cruises depart every Friday, 4.00pm from Echuca.

Disembarking Monday, 9.30am at Torrumbarry.

### Highlights

Unforgettable onshore tour that includes a visit to the Heritage Farm Museum.

Embark on an expedition eco-cruise up river aboard the Murray Explorer

Indulge in tastings of the table and fortified wines at St Anne's Winery.

Explore Perricoota Station's gardens and marvel at the beauty of the filming location for the famous Australian television series, All the Rivers Run.

Enjoy a memorable riverside BBQ dining experience under the stars, with live entertainment and a crackling campfire.

Take in the beauty of the Torrumbarry Weir and its surroundings.

Experience all-day cruising with a historical commentary that will transport you back in time and immerse you in the rich cultural heritage of the Murray River region.

### Inclusions

Complimentary Echuca coach transfers to/from Emmylou

Luxury air-conditioned cabin with private ensuite

All onboard meals including morning and afternoon tea

Regionally-inspired meals prepared by onboard chef

Onshore Tours

Complimentary selected wine & beer with dinner service

Espresso coffee, tea, soft drink & bottled water

Complimentary WIFI throughout the boat



### Day 1. Riverside property Layfield Lane

As Emmylou departs from Echuca, you can relax and enjoy an afternoon Devonshire tea while taking in the stunning sights and sounds of the river. You will have plenty of time to chat with the skipper and learn about the history of the vessel or simply unwind in your private cabin.

As the sun begins to set, Happy Hour starts, where you can enjoy a drink in the saloon before arriving at Layfield Lane for a grand dinner on the riverbank. The signature Australian BBQ, lit by candles and stars, sets the perfect mood for an evening of casual conversation and live entertainment around the campfire.

### Day 2. Deep Creek Marina

Experience the perfect start to your day with a delightful breakfast before embarking on a captivating half-day land and river tour that promises to be an unforgettable journey. Your adventure begins with a visit to the fascinating Heritage Farm Museum, where you'll immerse yourself in the charm of the past.

Next, get ready to be enchanted as you join the Murray Explorer, a magnificent vessel that will take you on an Expedition cruise along the upper Murray River. Prepare to be awestruck by the natural wonders that surround you, from breathtaking landscapes to a rich array of wildlife. Keep your eyes peeled for White Faced Herons and you may even find a King Fisher, all this along with a captains commentary.





Later, you will visit St Anne's Winery for a tasting of their fabulous table and fortified wines before returning to Emmylou for lunch as you continue downriver towards Deep Creek Marina. In the evening, you can unwind with a fascinating documentary featuring archival footage of the paddlesteamers and communities of the Murray River.

### Day 3. Perricoota Station & Torrumbarry Weir

Today, Emmylou embarks on an exhilarating full-day cruise bound for Torrumbarry Weir, promising an enriching journey filled with exploration and scenic delights.

Amidst this captivating cruise, a mid-morning interlude beckons at the renowned Perricoota Station. Join the skipper for an immersive walking tour enveloped by the rich historical tapestry of Perricoota Station's heritage.

Continuing the voyage towards Torrumbarry Weir, anticipation mounts for the forthcoming discoveries. Upon reaching the weir's shores, partake in a guided walk, traversing the structure and delving into its history and significance. Explore the Interpretive Centre, a treasure trove of knowledge illuminating the intricate details of the Murray Darling Basin and the ingenious weir and lock system, which traces its origins back to 1923.

As the day gracefully transitions into evening, prepare for a splendid conclusion to this memorable journey. Indulge in a delectable final dinner hosted by your Skipper and Engineer, commencing with tantalising pre-dinner canapés and refreshing drinks against the backdrop of the setting sun casting its golden hues over the tranquil weir. As the stars emerge in the night sky, casting their celestial glow, savor every moment of this serene and magical evening aboard the Emmylou.

### Day 4. Echuca

This morning, early risers can enjoy a riverside stroll before breakfast. A courtesy vehicle will then be ready to return you to Echuca, where you will reluctantly say farewell to your unforgettable river journey on the PS Emmylou.



#### FROM \$1,470 PER PERSON TWIN SHARE

Month	Best Price From*	Twin Cabin	Double Cabin	Queen	Emmylou Suite
April	\$1,620	\$1,800	\$1,800	\$1,830	\$2,160
May	\$1,620	\$1,800	\$1,800	\$1,830	\$2,160
June	\$1,470	\$1,620	\$1,620	\$1,647	\$1,944
July	\$1,470	\$1,620	\$1,620	\$1,647	\$1,944
Aug	\$1,470	\$1,620	\$1,620	\$1,647	\$1,944
Sept	\$1,620	\$1,800	\$1,800	\$1,830	\$2,160
Oct	\$1,620	\$1,800	\$1,800	\$1,830	\$2,160
Nov	\$1,620	\$1,800	\$1,800	\$1,830	\$2,160
Dec	\$1,620	\$1,800	\$1,800	\$1,830	\$2,160
Jan	\$1,620	\$1,800	\$1,800	\$1,830	\$2,160
Feb	\$1,620	\$1,800	\$1,800	\$1,830	\$2,160
Mar	\$1,620	\$1,800	\$1,800	\$1,830	\$2,160

**Coach Transfers:** Your fare includes complimentary coach transfers from our Echuca Car Park/Train Station to Emmylou at the beginning and end of your cruise.

3 Night DISCOVERY CRUISE



# 4 Night EXPLORER CRUISE

## Optional Rail

Start your river cruise from Melbourne - Complimentary. Return V/Line Train fares are included in your cruise fare.

## Optional Echuca Car Parking.

Secure undercover car parking is \$30 per night.

## Check In Location

Echuca Car Park - 2.30pm.

## Departure & Arrival Times

Cruises depart every Monday, 4.00pm from Torrumbarry.

Disembarking Friday, 9.30am at Echuca.

## Highlights

Owner led Guided tour of Restdown Winery & wetlands with lunch

Guided gardens tour of Perricoota Station where All the Rivers Run was filmed

Narrated Echuca coach tour of historic sites

Riverside BBQ Dining under the stars, campfire & Live Entertainment (riverside dinner is seasonal)

1 hour cruise aboard the 110 year old PS Canberra with morning tea

All-day cruising with historical commentary

## Inclusions

Luxury air-conditioned cabin with private ensuite

All meals including morning and afternoon tea

Chef prepared Regionally-inspired meals

Onshore Tours

Selected wine & beer with dinner service

Espresso coffee, tea, soft drink & bottled water

WIFI throughout the boat

Complimentary transfers from Torrumbarry Weir to Echuca and Car Parking

## Day 1. Norris Bend

As you depart Torrumbarry upstream, enjoy an afternoon Devonshire tea, take in the sights and sounds of the river and get to know your fellow cruisers. There's ample time to chat with the skipper in the wheelhouse to learn about PS Emmylou, her river history or simply relax in your private cabin. When the sun begins to set, this marks the start of 'Happy Hour'. Enjoy a drink in the saloon before a chef-prepared welcome dinner. Listen to the river birds' evening chorus and watch for kangaroos, wombats, and many species of birds as the stars begin to appear. Tonight, we moor at Norris Bend where your crew will have a riverside campfire (weather dependant) ready for you to enjoy after diner.

## Day 2. Perricoota Station

After a hearty breakfast, Emmylou cruises to the famous Perricoota Station, the property first settled by James Maiden in 1843, and famous for starring in the TV mini series "All the River Run" where PS Emmylou was renamed PS Providence. Here you will depart to Restdown Winery, producers of fine organic wines and Hereford beef. Join the property's owners for a guided tour along a 1.4km wetlands walking trail, highlighting items of great Aboriginal significance before a gourmet lunch of local produce and wine tastings.

Arriving back at Perricoota Station the skipper will invite you to walk along the historical buildings and immaculate gardens of Perricoota Station before happy hour. Tonight enjoy a fabulous dinner on the deck on Emmylou overlooking the famous Perricoota Station mansion. Tonight, after dinner it's Movie Night with a special presentation of "Riverboats Remembered", a fabulous historical presentation featuring archival footage of the paddle steamers and communities of the Murray River from the early 1900s through to the mid-1970s.



### Day 3. River Cruising & Layfield Lane

For early risers and keen photographers, the morning mist and wildlife around Perricoota is a sight to behold. After breakfast, Emmylou gracefully steams onwards upstream for a full day of cruising towards our riverside mooring, Layfield Lane mooring. Today enjoy lunch on the deck or in the saloon with plenty of time to relax with a good book or just take in the river views. Tonight, enjoy a grand dinner on the riverbank - our signature Australian BBQ (weather dependent), lit up by candles on the tables and stars in the sky. After dinner enjoy casual conversation around the campfire (weather dependent) with live entertainment before retiring for the evening.

### Day 4. Town Tour & Echuca

Start your day with a satisfying breakfast to fuel up for an exciting half-day adventure on both land and water. Your guided Henry Hopwood Town Tour tour will take you through the charming town of Echuca, uncovering hidden historical gems like Hopwood's Punt and the pontoon bridge. This bridge, the brainchild of Echuca's founder Henry Hopwood, marks the initial river crossing in the area.

Next, prepare to be enchanted by our 110 year old PS Canberra featuring a red gum timber hull built in 1912 at Goolwa South Australia. Enjoy morning tea aboard.

Before returning to Emmylou for lunch when your river cruise adventure continues upstream cruising past the imposing Port of Echuca Wharf once home to over 100 paddlesteamers in its heyday. This evening you will enjoy a farewell dinner cruising upriver of Echuca .

### Day 5. Echuca

This morning before breakfast early risers can enjoy a riverside stroll before we reluctantly say farewell.



#### FROM \$2,010 PER PERSON TWIN SHARE

Month	Best Price From*	Twin Cabin	Double Cabin	Queen	Emmylou Suite
April	\$2,200	\$2,400	\$2,400	\$2,440	\$2,880
May	\$2,200	\$2,400	\$2,400	\$2,440	\$2,880
June	\$1,960	\$2,160	\$2,160	\$2,196	\$2,592
July	\$1,960	\$2,160	\$2,160	\$2,196	\$2,592
Aug	\$1,960	\$2,160	\$2,160	\$2,196	\$2,592
Sept	\$2,200	\$2,400	\$2,400	\$2,440	\$2,880
Oct	\$2,200	\$2,400	\$2,400	\$2,440	\$2,880
Nov	\$2,200	\$2,400	\$2,400	\$2,440	\$2,880
Dec	\$2,200	\$2,400	\$2,400	\$2,440	\$2,880
Jan	\$2,200	\$2,400	\$2,400	\$2,440	\$2,880
Feb	\$2,200	\$2,400	\$2,400	\$2,440	\$2,880
Mar	\$2,200	\$2,400	\$2,400	\$2,440	\$2,880

**Coach Transfers:** Your fare includes complimentary coach transfers from our Echuca Car Park/Train Station to Emmylou at the beginning and end of your cruise.

4 Night Explorer Cruise



# 7 Night ALL THE RIVERS RUN CRUISE

## Optional Rail

Start your river cruise from Melbourne - Complimentary. Return V/Line Train fares are included in your cruise fare.

## Optional Echuca Car Parking.

Secure undercover car parking is \$30 per night.

## Check In Location

Echuca Car Park - 2.30pm

## Departure & Arrival Times

Cruises depart every Monday, 4.00pm from Torrumbarry.

Disembarking Following Monday, 9.30am at Torrumbarry

## Highlights

Enjoy multiple unique sightseeing tours throughout the Murray River region.

Join an owner-led guided tour of Restdown Winery & wetlands, followed by a delicious lunch.

Learn about the rich local history on a town tour of historical Echuca sites plus river cruise aboard 110 year old PS Canberra.

Visit a Heritage Farm Museum on an unforgettable onshore tour.

Enjoy a regional Silo Arts Tour and have lunch at the Colbinabbin Pub.

Embark on an expedition eco-cruise aboard the Murray Explorer and enjoy a scenic lunch on the riverbanks.

Indulge in tastings of table and fortified wines at two regional wineries.

Explore the beautiful gardens of Perricoota Station, a famous filming location for All the Rivers Run.

End your day with a memorable riverside BBQ dining experience under the stars, complete with live entertainment and a crackling campfire.

Take in the stunning beauty of the Torrumbarry Weir and its surroundings.

Experience all-day cruising with a historical commentary that will transport you back in time and immerse you in the rich cultural heritage of the Murray River region.

## Inclusions

Complimentary transfer to/from Emmylou

Luxury air-conditioned cabin with private ensuite

All onboard meals including morning & afternoon tea

Four Onshore tours

Regionally-inspired meals prepared by onboard chef

Complimentary selected wine & beer with dinner service

Espresso coffee, tea, soft drink & bottled water

Complimentary WIFI throughout the boat

## Day 1. Norris Bend

As Emmylou departs Torrumbarry and have the opportunity to indulge in an afternoon Devonshire tea while taking in the scenic views and getting to know your fellow cruisers. You can chat with the skipper in the wheelhouse and learn about the river history of PS Emmylou or unwind in your private cabin or the saloon during "Happy Hour" as the sun sets.

In the evening, the crew will set up a riverside campfire (subject to weather) for you to enjoy after a welcome dinner at Norris Bend, prepared by the chef. You can also look out for kangaroos, wombats, and birds while taking in the evening chorus of the river birds and the emerging stars.

## Day 2. Perricoota Station

After a hearty breakfast before cruising to the famous Perricoota Station. You'll have the chance to board our coach for a visit to Restdown winery with the property's owners, walk along a 1.4km wetlands trail with significant Aboriginal items, and enjoy a gourmet lunch of local produce and wine tastings.

You can then explore the historical buildings and immaculate gardens of Perricoota Station before having dinner on Emmylou's deck overlooking the mansion.

The night will conclude with a fascinating documentary featuring archival footage of the paddlesteamers and communities of the Murray River.

## Day 3. Layfield Lane

For early risers and avid photographers, the morning mist and wildlife around Perricoota is a spectacle to behold. You'll then spend the whole day cruising upstream towards Layfield Lane, enjoying lunch on the deck or in the saloon.

In the evening, you can experience a grand dinner on the riverbank with the signature Australian BBQ, followed by live entertainment and casual conversation around the campfire (weather dependent).

## Day 4. Town Tour & Echuca

Begin your day with a hearty breakfast to prepare for an exhilarating half-day expedition encompassing both land and water. Embark on our unique guided Henry Hopwood Town Tour, a captivating journey through the quaint town of Echuca, where you'll unearth hidden historical treasures such as Hopwood's Punt and the pontoon bridge. This bridge, conceptualized by Echuca's founder, Henry Hopwood, stands as the original river crossing point in the region.

Prepare to be captivated by the 110-year-old PS Canberra, boasting a red gum timber hull constructed in 1912 at Goolwa, South Australia. Indulge in morning tea aboard this vessel before returning to Emmylou for lunch, your river cruise adventure continues upstream, passing by the impressive Port of Echuca Wharf, which was once bustling with over 100 paddle steamers during its prime.

## Day 5. Silo Tour & Layfield Lane

Prepare yourself for an engaging half-day expedition that will immerse you in the beauty of local artistry and historical vignettes. The day kicks off with a visit to the breathtaking local art silos situated at Rochester and Colbinabbin. These larger-than-life paintings are a testament to the region's rich heritage and are sure to leave an indelible impression.

Your excursion doesn't just end with the visual feast of the silos; it extends to a delightful lunch at a renowned local pub. Here, you'll not only savor delicious fare but also have the unique opportunity to interact with the pub's welcoming owners and engage in lively conversations with the friendly locals.

As you reboard the Emmylou, get ready to unwind during the afternoon cruise downstream with a relaxing Devonshire tea. The serene ambiance of the river complements the delectable treats served, providing a perfect backdrop for a leisurely afternoon. As the sun starts savor a refreshing drink in the ship's saloon while basking in the scenic beauty surrounding you.

As twilight sets in, a magical experience awaits you at Layfield Lane. Following a sumptuous Australian BBQ dinner served on the riverbank the atmosphere transforms with live entertainment around a crackling campfire under the sparkling stars.

## Day 6. Deep Creek Marina

Today you will experience the perfect start to your day with a delightful breakfast before embarking on a captivating half-day land and river tour that promises to be an unforgettable journey. Your adventure begins with a visit to the fascinating Heritage Farm Museum, where you'll immerse yourself in the charm of the past.

Next, get ready to be enchanted as you join the Murray Explorer, a magnificent vessel that will take you on an Expedition cruise along the upper Murray River. Prepare to be awestruck by the natural wonders that surround you, from breathtaking landscapes to a rich array of wildlife. Keep your eyes peeled for White Faced Herons and you may even find and you may even find a Kingfisher, all this along with a captain's commentary.

On your return to Emmylou we visit St Anne's Winery for tasting of their fabulous table and fortified wines before returning to Emmylou for an afternoon tea service as you continue downriver towards Deep Creek Marina.



## Day 7. Torrumbarry Weir

PS Emmylou departs early for a full day of cruising with a stop at the famous Perricoota Station before continuing downriver towards Torrumbarry Weir. Upon arrival, you can take a guided walk across the weir with the Skipper, visiting the Interpretive Centre and learning about the Murray Darling Basin, the weir, and the lock system that dates back to 1923. Tonight, enjoy a delicious final dinner hosted by your Skipper with pre-dinner canapes and drinks as the sun settles over the weir. Listen to the river birds' evening chorus and watch for kangaroos, wombats, and various bird species as the stars begin to appear during dinner.

## Day 8. Echuca

Early risers can enjoy a riverside stroll before breakfast. A courtesy vehicle will then be ready to return you to Echuca, where you will reluctantly say farewell to your unforgettable river journey on the PS Emmylou.

### FROM \$3,630 PER PERSON TWIN SHARE

Month	Best Price From*	Twin Cabin	Double Cabin	Queen	Emmylou Suite
April	\$4,050	\$4,200	\$4,200	\$4,270	\$5,040
May	\$4,050	\$4,200	\$4,200	\$4,270	\$5,040
June	\$3,630	\$3,780	\$3,780	\$3,843	\$4,536
July	\$3,630	\$3,780	\$3,780	\$3,843	\$4,536
Aug	\$3,630	\$3,780	\$3,780	\$3,843	\$4,536
Sept	\$4,050	\$4,200	\$4,200	\$4,270	\$5,040
Oct	\$4,050	\$4,200	\$4,200	\$4,270	\$5,040
Nov	\$4,050	\$4,200	\$4,200	\$4,270	\$5,040
Dec	\$4,050	\$4,200	\$4,200	\$4,270	\$5,040
Jan	\$4,050	\$4,200	\$4,200	\$4,270	\$5,040
Feb	\$4,050	\$4,200	\$4,200	\$4,270	\$5,040
Mar	\$4,050	\$4,200	\$4,200	\$4,270	\$5,040

**Coach Transfers:** Your fare includes complimentary coach transfers from our Echuca Car Park/Train Station to Emmylou at the beginning and end of your cruise.

# Extend YOUR STAY



## Hotels

Echuca Moama is a destination in its own right and truly worth exploring. Staying a day or two before boarding your cruise, or after you return to dock, is a great way to immerse yourself in regional Australia. We're delighted to partner with an award-winning hotel in Echuca conveniently located close to the port and several Melbourne hotels for those travelling further afield. Pre and post-cruise accommodation can be booked directly through Murray River Paddle Steamers.

### Echuca Undercover Car Parking

Secure undercover warehouse parking is available for cruise passengers' cars and small caravans at a rate of \$25 per day. Prior reservation is required. Please contact us if you have a larger vehicle/caravan.



### Mercure Port of Echuca Hotel

#### Superior King Room \$195 per night

Extend your experience in Echuca with a pre or post-cruise stay at the Mercure Port of Echuca Hotel. Located in the centre of town, within walking distance to the port and High Street shops, our exclusive rate offers you a Deluxe Room featuring a king bed, plasma TV and DVD player, exquisite bathroom, pay-TV and wireless internet access.



# 48 Hours in Echuca Moama

Arriving at the twin towns of Echuca Moama nestled on Australia's longest navigable river, replete with Mediterranean climate, you'll be able to boast about visiting two Australian states (NSW & Victoria) in one day. 48 hours in Echuca Moama provides a suggested highlights itinerary to make the most of your stay.

## Day 1

### 9am Breakfast

Indulge in one of the many coffee spots around town - enjoy breakfast at one of the quaint sidewalk cafes

### 10am Mid Morning

Step into the historic Port precinct, wander through the heritage streetscape, taking in the artists at work, the galleries, the winery, fudge shop, blacksmith at work & hop aboard the horse and carriage for a short ride around the town. Browse the displays telling stories of the river trade at the Port of Echuca Discovery Centre & the historic wharf.

### 11am Wharf To Winery

Indulge in Australia's most unique restaurant aboard one of the Australia's historic Paddlesteamers, while cruising the river.

Take the Wharf to Winery cruise, enjoying lunch at Morrisons Winery overlooking the vineyards & river.

### 2.30pm Early Afternoon

Having spent a leisurely few hours dining on or near the river, ramp it up with a visit to the strawberry farm (October - May) to pick your own strawberries and have a mid afternoon strawberry ice cream - breathe in the strawberry aroma while the luscious red berries are succulently warm and ready for tasting.

### 4pm Late Afternoon

Call into the great Aussie Beer Shed on the way home to Echuca and marvel at the Australiana collection and unlock the stories of many facets of Australian life. Back in town refresh at your accommodation and take a walk along the banks of the river through the stands of river red gums. Enjoy dusk with the setting sun as the birds fly in and sing their evening songs.

### 8pm Dinner

Dine at one of Echuca Moama's signature restaurants - the choice is yours! Local produce from the nearby farms and fruit and vegetable gardens are showcased on the menus. Tasting the local wines or craft beers you'll be spoilt for choice.

## Day 2

### 7am Early Morning

For those that like some early morning activity - jump on a stand-up paddleboard (SUP) and literally walk on water! Savour the stillness of the morning, with the light streaming through the river red gums with a pale pink sky and the fresh clear morning air - you'll never want to leave! For those who would prefer an early morning walk or jog, the river setting provides for a great meditative experience - one you won't forget.

### 9 am Breakfast

To cool off, sit in one of the outdoor cafes or indulge in one of the many quaint little cafes around town! A smoothie, a caffeine heart starter or tingling fresh water is a great way to refresh after the early morning activity.

### 10am Mid Morning

Wander the Historic Port Precinct and High Street Shops. Visit the Echuca Historical Society for a history lesson of the river and local communities.

### 12 Noon Lunch

Feed your appetite with a lunch at one of our many eating spots - Mediterranean, Vegan, Pub or Asian are all there for you to try.

### 2pm Early Afternoon

A short drive to the township of Kyabram 30 minutes away you'll find a quaint little Australian town where there is still a glimmer of yesteryear. Shop, visit the Kyabram Town Hall with its quality art and fashion exhibitions, don't miss the Kyabram Fauna Park with its up close and personal Australian animal experiences and drop into the camel farm for an interesting encounter with the camels.

### 4pm Late Afternoon

To complete the day pop into the, flour mill or local pub - they all provide an insight into the unique way of Australian life.

### 7pm Evening

In winter book dinner at one of the many local pubs with a roaring fire. In summer become part of the local scene and enjoy some of the balmy evenings in the beer gardens, clubs, pubs or music venues.

Extend YOUR STAY

# BOOKING TERMS & CONDITIONS

These Booking Conditions set out the terms on which you contract with us for the arrangement and delivery of travel arrangements for your cruise. By making a booking with us, you acknowledge that you have read, understood and agree to be bound by these Booking Conditions. We reserve the right to change these Booking Conditions at any time prior to you making a booking request.

"You" and "Your" means all persons named in a booking (including anyone who is added or substituted at a later date). "We", "us", "our" and "Murray River Paddlesteamers" means Australian Paddlesteamers Pty Ltd (ACN 603 932 350).

## BOOKINGS

A booking request is accepted when we issue a written booking confirmation and you have paid your deposit. It is at this point that a contract between us and you comes into existence subject to these Booking Conditions. We reserve the right to decline any booking at our discretion. No employee of ours other than a director has the authority to vary or omit any of these Booking Conditions or to promise any discount or refund.

## SERVICES

We commence providing services to you as soon as we accept your booking. This includes (often significant) work undertaken prior to travel to arrange and coordinate the delivery of your travel arrangements. You also receive the benefit of work we undertake in anticipation of bookings. The services we provide to you are limited to (a) the arrangement and coordination of your travel arrangements; and (b) the delivery of travel arrangements which we directly control.

## PRICES & EXCLUSIONS

Prices stated are in Australian Dollars (\$AUD) and are current at the time of publication. The most up to date pricing is available on our website. The published price includes passenger accommodation according to the selected category of cabin and other inclusions as per the published itinerary.

International and domestic airfares and airport/hotel transfers are not included unless specifically stated. Costs associated with passports, visas, vaccinations, insurance, meals & beverages (other than those stipulated), emergency evacuation costs, gratuities, and all items of a personal nature are not included.

## PRICE VARIATIONS

We reserve the right to vary the cost of your travel arrangements prior to commencement for circumstances beyond our control such as increases to the cost of fuel after we have confirmed your booking or new or amended Government charges.

We will absorb the first 5% of any increases to the cost of fuel. We may pass on any increases to the cost of fuel above 5% via a surcharge.

If we impose a surcharge of more than 10% of the cost of your travel arrangements, you may cancel your travel arrangements and receive a full refund of payments made for those arrangements. You must exercise this right within 14 days after receipt of a surcharge invoice.

## DEPOSIT

A \$400 deposit per person is required within 3 working days (unless otherwise stated) of us accepting your booking. Please note that we may not hold any services for you until we receive payment of your deposit, meaning that services may become unavailable or prices may increase, in which case you will be responsible for paying the increased price, and we will not be responsible if services become unavailable.

## FINAL PAYMENT

Payment in full must be received by the date(s) reflected on your invoice (which will be no less than 90 days prior to the commencement of your cruise). Note: some cruises or particular arrangements may require payment earlier or in additional instalments and this will be advised with the booking confirmation.

If you fail to make payment by the due date, we will remind you to make payment. In addition to the payment, you will also be responsible for any costs imposed on us by suppliers resulting from late payment. If we do not receive payment within 7 days after the reminder, you will be deemed to have cancelled your booking.

Please note that cash payments are not accepted, and credit and debit card payments are subject to a processing fee of between 1% and 3% depending on the card used for Visa, MasterCard and AMEX. In the case of debit cards, a charge of 0.5% to 1% will be charged. International bank transfers are subject to a \$15 fee to cover transactional costs we incur.

## CANCELLATIONS BY YOU

You may cancel your booking by giving written notice to us. We will make refunds to you less cancellation fees in accordance with the table below, calculated from the date which we receive written notice:

- Over 90 days before commencement: Deposit and any instalment payments only
- 90 days to 60 days before commencement: 50% of the booking value
- 59 days to 14 days before commencement: 90% of the booking value
- Within 14 days or no show 100% of the booking value

The cancellation charges specified above represent a genuine pre-estimate of our loss and are required to protect our legitimate business interests.

For group departures, a transfer of a confirmed booking to another departure date is deemed to be cancellation of the original booking.

## ILLNESS OR VACCINATION STATUS PREVENTING TRAVEL

If due to any illness, suspected illness or failure to satisfy any required tests or vaccination requirements we acting reasonably refuse to board you then we will provide you with reasonable assistance for you to arrange onward travel arrangements.

In this circumstance, we will not be liable to refund the cost of your travel arrangements because we will not have an opportunity to resell them. We will not be responsible for any other costs or loss you incur in connection with your booking (for example, airfares and visa expenses) and onward travel arrangements.

We strongly encourage you to purchase travel insurance that adequately responds to cancellations and curtailments associated with illness and other unforeseen events as soon as you have paid your deposit.



## OTHER CANCELLATIONS

In these Booking Conditions, the term Force Majeure means an event or events beyond our control and which we could not have reasonably prevented, and includes but is not limited to: (a) natural disasters (including not limited to flooding, fire, landslide), adverse weather, high or low water levels; (b) war, armed conflict, industrial dispute, civil strife, terrorist activity or the threat of such acts; epidemic, pandemic; (d) any new or change in law, order, decree, rule or regulation of any government authority (including travel advisories and restrictions).

### Force Majeure - Prior to travel If:

- in our reasonable opinion we consider that your cruise cannot safely or lawfully proceed due to a Force Majeure event; or
- you give us notice no more than 14 days prior to commencement of your booked travel arrangements that you cannot reasonably make use of your cruise due a Force Majeure event (for example due to border closures)

then we may:

- reschedule your cruise, but only if you are agreeable to the rescheduled arrangements; or
- cancel your cruise, in which case our contract with you will terminate.

If we cancel your cruise, neither of us will have any claim for damages against the other. However, we will either:

- issue you with a credit equal to payments received by us for the cancelled cruise, redeemable within 24 months of issue against any travel services offered by us; or
- refund payments attributable to the cancelled cruise less: (a) unrecoverable third party costs and other expenses incurred by us for the cancelled cruise; (b) overhead charges incurred by us relative to the price of the cruise; and (c) fair compensation for work undertaken by us in relation to the cruise until the time of cancellation and in connection with the processing of any refund.

Please note that our ability to issue you with a credit may be dependent on our suppliers issuing corresponding credits to us. We cannot guarantee that our suppliers will issue corresponding credits and so in such circumstances we may opt to pay you a limited cash refund as outlined.

### Force Majeure - During travel

If due to Force Majeure we cancel travel arrangements after your cruise has commenced, we will provide you with a refund of recovered third party costs for cancelled travel arrangements only.

## Force Majeure – General

Were a limited cash refund is to be paid by us, we will use reasonable endeavours to recover payments from third parties attributable to your booking, but we make no guarantee that we will be able to recover these payments either partially or at all. If after we have paid you a limited cash refund (or after we determine that no cash refund is currently payable) we recover payments from third parties attributable to your booking, then we will pass on this payment to you.

We will not be responsible for any other loss or loss you incur in connection with your booking (for example, airfares and visa expenses) if your cruise or particular travel arrangements are cancelled due to an event of Force Majeure.

If we provide you with any alternative services or assistance where travel arrangements are cancelled or rescheduled due to Force Majeure, then you agree the amount to be refunded to you will be reduced by the value of these services and assistance.

You acknowledge that the terms in this section are reasonably necessary to protect our legitimate business interests. We strongly encourage you to purchase travel insurance that adequately responds to cancellation and rescheduling risks associated with Force Majeure events as soon as you have paid a deposit.

### Other cancellations

If we cancel your cruise for reasons other than Force Majeure, you will be offered (at your election) a refund of all funds paid, or the offer of travel arrangements of substantially equal quality if appropriate.

### AMENDMENTS BY YOU

We will endeavour to accommodate amendments and additional requests. You acknowledge that these may not be possible to fulfil. An amendment fee of \$150 will be levied to cover communication and administration costs for any changes to bookings on top of any price variations. You will also be required to pay any additional costs charged by suppliers.

### AMENDMENTS BY US

#### Prior to travel

Occasionally, we may need to make amendments or modifications to the itinerary and its inclusions and you acknowledge our right to do this. If we become aware of a significant change to your itinerary or its inclusions prior to the commencement of your cruise (where the cruise can still proceed), then we will notify you within a reasonable time and you may elect to:

- proceed with the cruise - if in our reasonable opinion the changes result in a reduction in the value of services, then we will refund you an amount attributable to the reduction determined by us acting reasonably; or
- cancel your cruise, in which case we will refund you all payments received by us at that time.

If you do not make an election in writing within 7 days of us notifying you of the significant change, then you will be deemed to have elected to proceed with the cruise.

### During travel

We (including through the Captain) reserve the right to deviate from the vessel's advertised or ordinary itinerary or route, to delay, advance or lengthen any sailing, to omit or change ports of call, to arrange for substantially equivalent transportation by another vessel and/or by other means of transportation, including without limitation by coach or other land transportation alternatives, whether belonging to us or not, and to cause you to disembark from the Vessel temporarily or permanently on the happening of an event of Force Majeure or to protect life.

We will endeavour to minimise disruptions, but you agree that you will have no claim against us for a reduction in value of services in these circumstances unless we have contributed to the circumstances leading to the disruption or failed to reasonably mitigate those circumstances.

### General

To the fullest extent permitted by law, we will not be responsible for any omissions or modifications to the itinerary or the inclusions due to Force Majeure or other circumstances beyond our control happening after we have accepted your booking. This includes any loss of enjoyment or distress caused by omissions or modifications.

If you are entitled to any compensation for any modifications or omissions, then you agree it will be reduced by the value of any alternative services we provide which you accept.

We will not be responsible to you for any other expenses or loss you incur resulting from any amendment or change to the itinerary or its inclusions resulting from an event of Force Majeure.

### EMBARKATION

You are required to be present to board the vessel at the port or embarkation at least one hour before the initial scheduled departure time and any departure time subsequently announced during the voyage. We will have no liability to you if you are not on board prior to the vessel's departure unless our actions or omissions caused your failure to board.

## **BAGGAGE & PROHIBITED ITEMS**

Due to space limitations, you may bring aboard the vessel a maximum of 15kg of luggage. All baggage must be securely packed and distinctly labelled with your full name, the name of the vessel, your cabin number of (if known) and the sailing date of the vessel.

Under no circumstances, may dangerous articles such as firearms, explosives, oxygen or combustible substances, alcohol, drugs, illegal substances, or dangerous goods be taken aboard the vessel. Any such item shall be surrendered to the captain of the vessel at embarkation, and may be disposed of in the sole discretion of the captain.

## **LIABILITY FOR LOSS OR DAMAGE TO PROPERTY**

We provide facilities for safekeeping within cabins and strongly encourages you to deposit any jewellery or other valuables brought aboard the vessel and not on your person within such safekeeping facilities. To the fullest extent permitted by law, we will not be liable to you in respect of the following:

- (a) any loss of or damage to money, jewellery, precious stones, securities, financial instruments, tickets or other valuables unless the loss or damage is directly caused by our recklessness or gross-negligence;
- (b) personal belongings lost while unattended in public lounges or other public areas, whether on board the vessel or elsewhere.
- (c) any loss or damage to personal belongings due to ordinary wear and tear or Force Majeure Events.

To the extent only that we are liable for loss or damage to personal belongings:

- (a) settlements of reimbursable claims for lost belongings will be made on the basis of actual cash value (replacement cost less depreciation); and (b) settlements of reimbursable claims for damaged items will be on the basis of cost of repair or actual cash value, whichever is less.

## **ONBOARD SAFETY**

We may act reasonably (including through the captain of the vessel) at any time refuse to transport you and may without liability disembark you at any port or place, or transfer you to other means of transportation, because of: (a) a health or physical condition or mental disorder affecting their health and safety or the health and safety of yourself or any other person; (b) your failure to comply with the vessel's reasonable rules and regulations and the reasonable orders and directions of the vessel's officers and staff; (c) your failure to possess necessary vaccination certificates; (d) or for other similar causes which in our (including the Captain's) reasonable opinion render you unfit to travel on the vessel. In these circumstances, we may act

reasonably require you to remain in your cabin until such time as we disembark you.

You consent to a reasonable search of yourself, baggage or other property, and to the removal and confiscation or destruction of any object which may, in our opinion, impair the safety of the vessel or other passengers, or inconvenience other passengers.

## **UNUSED & DENIED SERVICES**

No refunds will be made for of any travel arrangements not utilised, whether by choice or because of late arrival or early departure. This includes the failure of common carriers to operate according to schedule, which we disclaim responsibility for.

If you are not fully vaccinated against Covid-19 and particular suppliers refuse to provide you with travel arrangements, then you agree you will not be entitled to any refund for those arrangements. We will not be responsible to you for any loss or expenses you incur (including loss of enjoyment) if you are denied services in these circumstances.

## **CLIENT NAMES – EXACTLY AS PER PASSPORT**

For security reasons, we require names to be given exactly as stated in your passport. If you do not advise the correct information and we have to re-issue tickets or other documentation, then you will be responsible for any fees charged (such as airline cancellation charges or re-issue fees) in addition to our own reasonable administration fees.

## **TRAVEL INSURANCE**

It is strongly encouraged that you are adequately insured for the duration of your cruise. We recommend comprehensive travel insurance to cover cancellation, medical requirements, luggage and additional expenses. The choice of insurer is yours. We strongly suggest you purchase insurance at the time you pay your deposit. This is because cancellation fees and charges are payable from that time.

## **VACCINATIONS**

We strongly encourage you to be fully vaccinated against Covid-19 with a vaccine approved by the Therapeutic Goods Administration. This is so health risks for yourself and others you come into contact with can be mitigated. If you choose to travel without being fully vaccinated, then you do so accepting the implicit risks to your health and you agree to provide us with waivers and releases as we may require. You acknowledge that future Government mandates may apply which may result in you being required to be vaccinated (and/or boosted) against Covid-19. It is your responsibility to obtain vaccinations and preventative medicines as may be required for the duration of the cruise. Any information provided by us is given in good faith.

## **HEALTH & FITNESS**

It is your responsibility to ensure that you have a suitable level of health and fitness to undertake the cruise of your choice. If you have doubts about your ability to undertake the cruise, please contact us to discuss your circumstances prior to making a booking request.

Without limiting the remainder of this section, if you have any mobility impairment you must be accompanied by someone who is able to assist you on shore and on board the vessel, and who is responsible for providing you all necessary aid and facilities.

## **Existing Medical Conditions**

If you have a medical condition which may reasonably be expected to increase your risk of needing medical attention or special assistance, or which may affect the normal conduct of the cruise, then you must advise us prior to or at the time you make your booking request.

We may request you to provide an assessment of your medical condition from a qualified medical practitioner. If the assessment indicates that you are not fit to travel or will require special assistance which we cannot reasonably provide, then we may cancel your booking. Provided you notified us of your medical condition prior to or at the time you made your booking request, we will provide you with a full refund of payments made less an administrative fee of \$150.

If you fail to provide a medical assessment within a reasonable time, then this will be considered a cancellation by you and cancellation fees and charges will apply (See 'Cancellation By You' section above).

## **New Medical Conditions**

You must advise us of any new or changed medical conditions which may reasonably be expected to increase your risk of needing medical attention or special assistance, or which may affect the normal conduct of the cruise.

We may request you to provide an assessment of your medical condition from a qualified medical practitioner. If the assessment indicates that you will require special assistance which we cannot reasonably provide or if you fail to provide a medical assessment within a reasonable time, then this will be considered a cancellation by you and cancellation fees and charges will apply (See 'Cancellation By You' section above).

## **Non-Disclosed Medical Conditions**

If any non-disclosed medical conditions mean that you will require special assistance which we cannot reasonably provide, then we acting reasonably may refuse to board you and this will be considered a cancellation by you and cancellation fees and charges will apply (See 'Cancellation By You' section above).

## **BAGGAGE & PROHIBITED ITEMS**

### **NO LIABILITY FOR MEDICAL TREATMENT**

If you require medical attention during the trip, medical services will be provided at local facilities. You will be responsible for all costs and expenses of medical services, treatment and medications. We will have no liability whatsoever for any costs incurred in connection with medical services, or for the quality of care you receive. If you are unable to request or authorise medical treatment and, in the opinion of the captain, medical attention is necessary, then you consent to treatment by medical professionals designated by us.

### **DIETARY REQUIREMENTS**

Special dietary requests are required to be notified to us at the time of booking. We will endeavour to accommodate requirements and to communicate your requirements to relevant third party suppliers. However, we cannot guarantee requests will be met by suppliers. It is your responsibility to check that meals and beverages do not contain any allergens. We expressly disclaim any liability for meals or beverages that contain allergens other than in circumstances where we have been negligent.

### **ADDITIONAL EXPENSES**

All charges for services and products provided on board the vessel must be settled via a credit or debit card before your final disembarkation from the vessel. Please note that cash is not accepted on board the vessel and card payments are subject to processing fees equal to the costs we incur to process card payments. Any other expenses incurred by you or by us on your behalf is payable by you on demand.

### **INDEPENDENT SERVICES**

We are not responsible for any additional activities or excursions which are not included in the booked itinerary or which we sell as agent for the principal operator. Any advice or recommendation given by us, a guide or local representative is made in good-faith, based on known information, and does not make us responsible for the acts or omissions of the principal operator of the excursion or activity.

### **ACCEPTANCE OF RISK**

#### **General**

You acknowledge that travel involves personal risks which may be greater than those present in your everyday life. You accept these risks.

#### **Covid-19**

You acknowledge that you are travelling at a time when Covid-19 is endemic and that Covid-19 presents risks to your health and may cause death. By making a booking request, you accept all risks associated with Covid-19 infection during travel and you release us (and our directors, officers, employees and

suppliers) from liability in connection with Covid-19 infection.

### **RESPONSIBILITY**

#### **Services supplied by independent suppliers**

Where a third party over whom we have no direct control (Independent Supplier) is the supplier of travel arrangements that form part of your cruise, you acknowledge that our obligations to you are limited to taking reasonable steps to select a reputable Independent Supplier and arranging for them to provide those travel arrangements to you. Independent Suppliers over whom we have no direct control include but are not limited to airlines, hoteliers, independent transport companies (i.e., vehicles or vessels not operated by us), restaurants, attraction and venue operators and common carriers.

To the fullest extent permitted by law, we will not be responsible to you for any loss, damage, personal injury or delay attributable to the actions or omissions of an Independent Supplier and not caused by our negligence. Any claims you have in this regard must be made against the Independent Supplier.

#### **Services we directly supply**

To the extent only that we are the principal supplier to you of travel arrangements or other services which we control, then we will provide those travel arrangements and services with reasonable skill and care.

We will only be responsible for our employees in the course of their employment, and for our agents and suppliers (where we have direct control over them) if they were carrying out the work we had asked them to do.

We will not be responsible for any loss, damage, claim or expense caused by the acts or omissions of yourself, of any other third party not connected with the provision of the travel arrangements or services, or due to an event of Force Majeure.

#### **General liability limitation**

We will not be responsible for any loss or additional expenses you incur for any missed connections/services attributable to delays outside of our control.

Australian Consumer Law and corresponding legislation in State jurisdictions in certain circumstances imply mandatory conditions and warranties into consumer contracts ("Consumer Warranties"). These Booking Conditions do not exclude or limit the application of the Consumer Warranties. Other than the Consumer Warranties, we disclaim all warranties.

To the fullest extent permitted by law, our maximum liability to you under these Booking Conditions, in tort (including negligence) or at law is limited to arranging for the travel arrangements to be resupplied or payment of the cost of having them resupplied.

## **COMPLAINTS**

In the event of a problem with any aspect of your travel arrangements you must tell us or make our representative or our local supplier aware of such problems as soon as possible. This is so we or our suppliers have had the opportunity to put things right on the ground.

If you notify us of a problem during travel and we haven't resolved it to your satisfaction, please follow this up in writing within 30 days from the end of your travel arrangements. This is so we have the opportunity to pursue the claim with our own suppliers (if relevant).

If you fail to follow this procedure, this may limit your rights to make a claim.

### **DEEMED ACCEPTANCE**

If you place a booking on behalf of another party, you represent and promise us that you are duly authorised to provide the agreement and consent of the other party to be bound by these Booking Conditions. You agree that you will be responsible for any loss or damage we incur if this is not the case.

### **IMAGE RELEASE**

When on the cruise, we may take photographs or make recordings of you and your activities that identify you. We reserve the right to use any images and/or recordings for promotional and marketing purposes. You consent to this use and acknowledge you will not be entitled to any payment or other compensation. If you do not consent to the use of your image or likeness, please advise us as least 21 days prior to the commencement of your tour.

### **GENERAL**

The contract between Australian Paddlesteamers Pty Ltd trading as Murray River Paddle Steamers and you is governed by the laws of the State of Victoria. Any disputes shall be exclusively dealt with by a court with the appropriate jurisdiction in Victoria and those courts entitled to hear appeals from those courts.

If any provision of these Booking Conditions is found to be unenforceable, then to the extent possible it will be severed without affecting the remaining provisions.

Any personal information you provide to us will be collected, stored, used, protected and shared in accordance with Australian Privacy Principles, and our Privacy Policy, which is published here <https://www.murrayriverpaddlesteamers.com.au/terms-conditions-privacy/>



**MURRAY  
RIVER**  
PADDLESTEAMERS



*"I fell in love with her  
and everyone who sails on her  
feels the same."*

REQUEST MORE INFORMATION  
57 Murray Esp, Echuca, VIC 3564  
CALL 03 5482 5244  
EMAIL [info@mrps.com.au](mailto:info@mrps.com.au)  
VISIT [mrps.com.au](http://mrps.com.au)

For reservations contact your travel agent: